

# ARC Connector Package Quick Install Guide

---

March 14<sup>th</sup>, 2016

Version 1.0

## REVISION HISTORY

---

Date	Author	Summary	Version
March 14 <sup>th</sup> ,	Jorge Fernandez	Initial creation of this document	1.0

## SCOPE OF THE DOCUMENT

---

This document illustrates the steps for installation and configuration of the FADEL's AEM Asset Rights Clearance package. At a high level, the process consists of the following:

- Installation of the package using the package manager.
- Configuration of the Package through OSGI console

Additionally, this document shows how to uninstall the package.

## Overview of ARC

---

The FADEL ARC Connector for Adobe Experience Manager provides seamless integration between AEM 6.1 and FADEL ARC – a sophisticated asset rights repository that enables users to check and clear digital assets against contract terms real time. Agencies, internal brand managers, and content distributors can leverage the FADEL ARC Connector for AEM to further shorten the timeline from concept to production for websites and apps, while mitigating compliance risk and protecting their brand.

A FADEL ARC account is necessary to be able to use the ARC Connector. To learn more about ARC or to create an account, please visit:

<http://fadel.com/ARC/>

## INSTALLATION OF THE PACKAGE

---

The Package Manager manages the packages on your local CQ installation, you can use the Package Manager for various actions, including configuring, building, downloading and installing your packages.

To install a package you have to follow three steps

- Open the package Manager
- Upload your Package
- Install the Package

### OPEN THE PACKAGE MANAGER

To be able of use the Package Manager you have to be administrator or be a user with the appropriate rights in the following locations:

- **/etc/packages** (full rights excluding delete)
- the node that contains the package contents

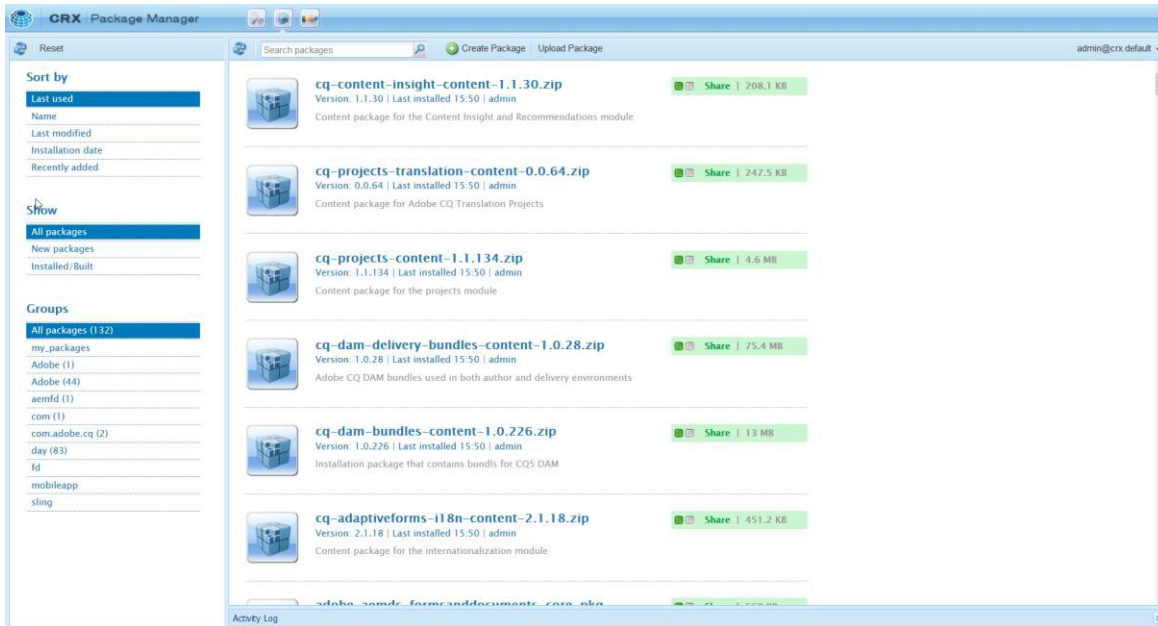
On the CQ5 Welcome screen

(<http://localhost:4502/libs/cq/core/content/welcome.html>), click **Packages** (or from the **Tools** console double-click on **Packages**).

Or, you can go directly to the following address:

<http://localhost:4502/crx/packmgr/index.jsp>

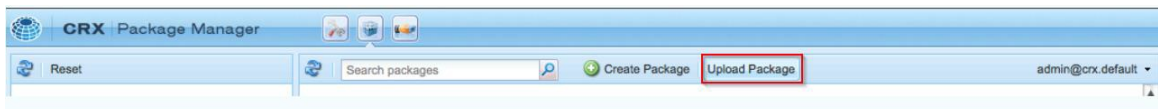
Your Package Manager looks similar to this:



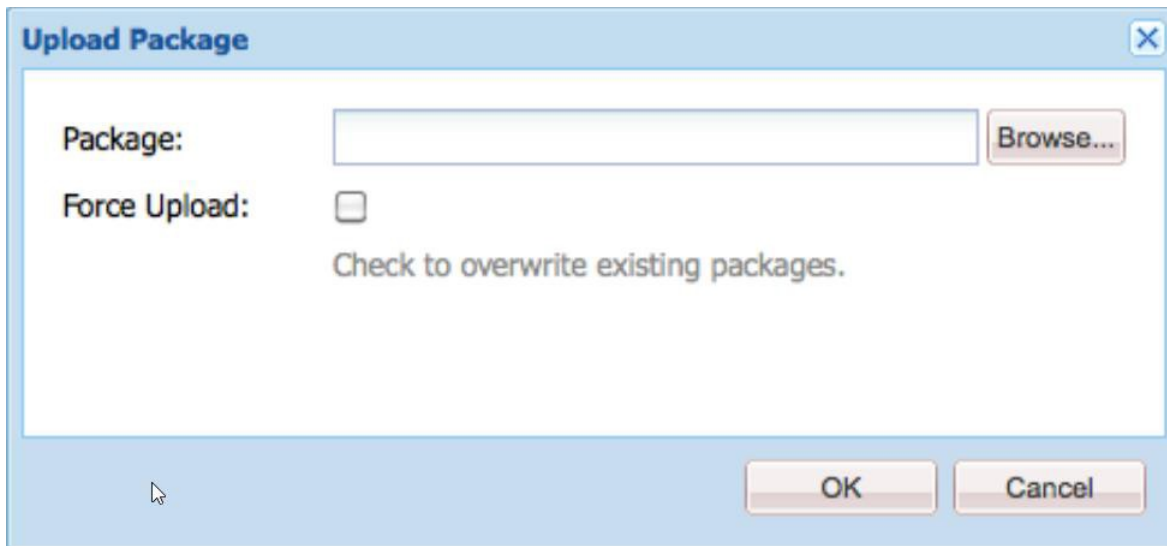
## UPLOAD FADEL ARC CONNECTOR PACKAGE FROM YOUR FILE SYSTEM

The second step consists in upload the FADEL package to your AEM instance.

To upload a package, click in the "Upload Package" button in the top of Package Manager screen:



This will open a dialog for select the package from your local file system:



- File  
You can either type the file name directly, or use the **Browse...** dialog to select the required package from your local file system (after selection click **OK**).
- Force Upload  
If a package with this name already exists you can click this to force upload (and overwrite the existing package).

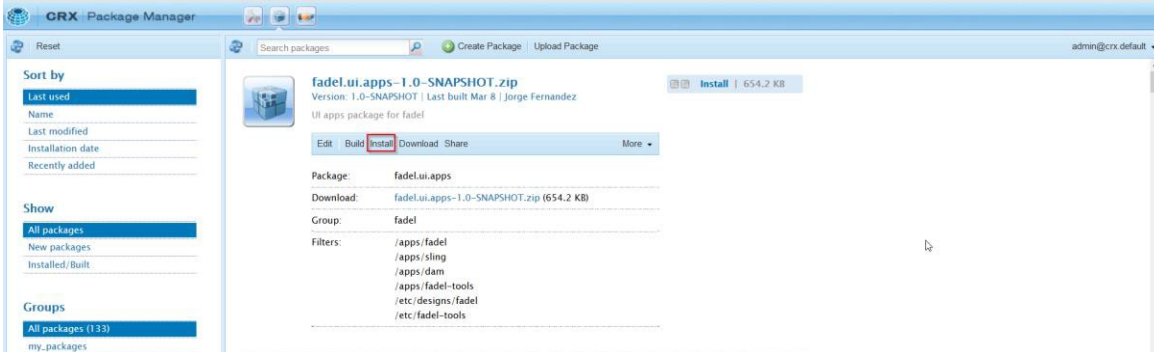
Click **OK** so that the new package is uploaded and listed in the Package Manager list.

## INSTALLING THE PACKAGE

After you upload a package, you need to install the content.

In the Package Manager navigate to the package you want to install, the same package you recently uploaded.

Ex: fadel.ui.apps-1.0-SNAPSHOT.zip



An **Install** button is shown at the side of Packages that have not yet been installed.

Click **Install** to start the installation. A dialog will request confirmation and list all changes being made. When finished click **Close** on the dialog.

The word **Installed** appears next to the package after it has been installed.

## CONFIGURING THE PACKAGE

---

Once the package installed you have to configure the Package using an OSGi config.

### OSGi Configuration with the Web Console

The Web console in AEM provides a standardized interface for configuring the bundles. The Configuration tab is used for configuring the OSGi bundles, and is therefore the underlying mechanism for configuring AEM system parameters.

Any changes made, are immediately applied to the relevant OSGi configuration, no restart is required. They can also be located for saving in packages for re-use in further installations.

Basically, you can navigate to the following URL in your AEM instance:

<http://localhost:4502/system/console/configMgr>

Next, find the `com.aem.fadel.core.servlets.FadeServlet` (FADEL ARC service API Config) configuration

Component com.irm.fadel.core.servlets.FadeServlet fadel - Core

Then you just need to open the configuration window (clicking on the pencil icon) and you should see the following configuration dialog:

Now you should enter your configuration parameters (mostly provided by your FADEL-ARC consultant). The current ARC base URL is:

<https://global.fadelarc.net/arc/>

**The User and Password fields** are used for authentication purposes during the requests made to the ARC's web service (these are basics parameters from your FADEL-ARC client workspace). User and Password information will be the same set of credentials that were used to create your ARC account. An ARC account is required in order to be able to use this service. To create an ARC account, please visit:

<http://fadel.com/ARC/>

**The ARC base URL** will be the starting segment from your FADEL-ARC RESTful web service,

For Example: if your FADEL-ARC web service URL is:

<https://global.fadelarc.net/arc/ipmSuite5/ws/V1/ipmSuite5/ws/V1/clearanceWS/assetClearance>

Your Base URL config will be the sum of the red part (usually different from one client to another) and the blue part (usually constant).

**Important:** for the Base URL field you have to include the "/" located after the "V1" segment.

The "**File Name as externalID**" parameter will alternate the use of the Asset file name as the External ID and the "externalID" parameter. If the checkbox is checked the asset file name will be used as external ID in the ARC repo and the value in the externalID will be ignored, in this case the result of the external ID tool will include the file name (without the extension) in the response data.

**The External ID Property:** the goal of this parameter is to provide the name of the property (Unique ID associated with an asset stored within AEM) that will be used as the External Identifier in the FADEL-ARC databases.

**Important:** the External ID Property content has to be a property in the {assetpath}/jcr:content/metadata node of the AEM asset. The OSGI bundle needs to be fully configured in order for the Asset Rights Clearance dialog to function.

**The Selection Type** field allows you to change the selection type from Multiple to Single for the Territories and Formats fields in the Asset Clearance Dialog.

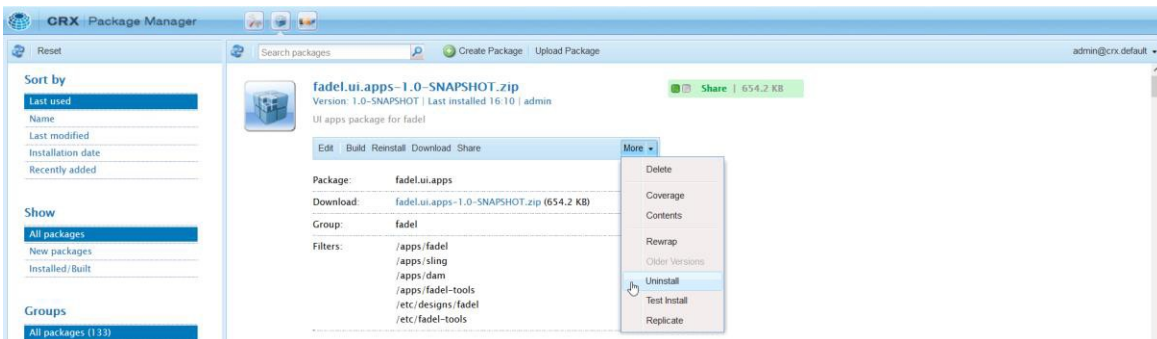


## UNINSTALLING THE PACKAGE

CQ lets you uninstall packages. This action reverts the contents of the repository that are impacted to the snapshot made immediately prior to the package installation.

In order to uninstall a package follow the following procedure:

- 1- In the Package Manager navigate to the package you want to uninstall.  
Ex: fadel.ui.apps-1.0-SNAPSHOT.zip
- 2- Click the package icon of the package you want to uninstall.
- 3- Click Uninstall to remove the contents of this package from the repository. A dialog will request confirmation and list all changes being made. When finished click Close on the dialog.



After uninstall you may want to delete the package, in this case you can click on the delete option.

## About FADEL

---

FADEL is a provider of cloud-based Intellectual Property Rights and Royalty Management software for Media, Entertainment, Publishing and High Tech. Built on a robust and adaptable architecture, FADEL IP Management software has been recognized for its end-to-end capabilities across the IP licensing lifecycle – from negotiation to payment. The trusted authority for the tracking and monetization of intellectual property usage, FADEL enables businesses to verify, capture and manage rights and royalties for their IP assets through its portfolio of software and expert services. For more information, visit [www.fadel.com](http://www.fadel.com).